



SYSTEMS

PANEL+[®]

WALL SYSTEM

Submittal Packet



PANEL+[®]

WALL SYSTEM by Old Mill Systems

Discover Panel+, an innovative wall system that integrates continuous insulation and an air/water barrier, designed for maximum design flexibility and flawless finish. With Panel+, reduce your labor costs by up to 60% and increase energy efficiency by up to 40%. Enjoy improved sound dampening and outdoor sound isolation with a thermal R-value of 4.2 per inch. Choose from thickness options of 1", 2", 3", 4", and custom options. Panel+ is customizable and comes with a 15-year warranty.

FEATURES & BENEFITS



NFPA 285 Compliant



15-Year Warranty



Eco-Friendly



Reduce Labor up to 60%



Increase Efficiency 40%



Moisture Protection



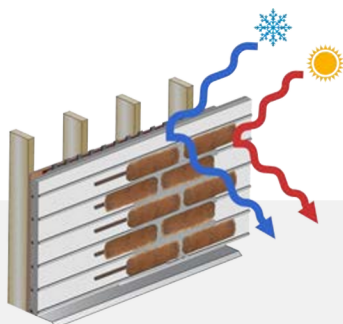
EPS Architectural Relief



Sound Dampening

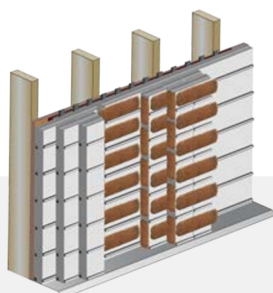


Exterior / Interior



CONTINUOUS INSULATION (CI)

Thermal bridging can account for heat loss of up to 30 percent in insulated buildings. Continuous Insulation with Panel+ counters this loss, enhancing energy efficiency and sustainability.



ARCHITECTURAL RELIEF

Achieve stunning architectural relief with Panel+. Customize your foam thickness for unique architectural designs and precision. Transform a flat wall into a captivating canvas with Panel+.



15-YEAR WARRANTY

Get peace of mind, knowing that the Panel+ quality and performance are backed by a long-term protection adding reliability for your construction projects.

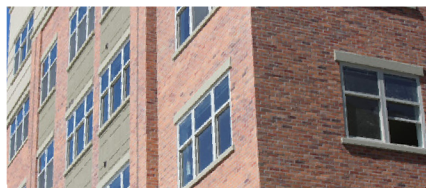
Panel+ is the cost-competitive solution that offers an integrated air barrier system, Continuous Insulation, and a high-quality veneer installation system. Additionally, its water drainage plane, ventilation channels, and insulation offer superior protection and energy efficiency. Choose Panel+ for your next project

PANEL+[®]

BRICK

BRICK EIFS

Panel+ Brick EIFS, is an advanced, energy-efficient exterior insulation and finish system designed to offer the beauty and durability of brick with enhanced thermal performance. The Brick EIFS integrates Old Mill Panel+ EPS Foam Panels, a high-quality air and water barrier, and a robust masonry veneer, creating a seamless, insulated façade suitable for both commercial and residential applications.



NFPA 285 Compliant



15-Year Warranty



Reduce Labor up to 60%



Increase Efficiency 40%



EPS Architectural Relief



Sound Dampening

Discover Panel+ Brick Today!

Discover Panel+, an innovative wall system that integrates continuous insulation and an air/water barrier, designed for maximum design flexibility and flawless finish. With Panel+, reduce your labor costs by up to 60% and increase energy efficiency by up to 40%. Enjoy improved sound dampening and outdoor sound isolation with a thermal R-value of 4.2 per inch. Choose from thickness options of 1", 2", 3", 4", and custom options. Panel+ is customizable and comes with a 15-year warranty."

Continuous Insulation

Thermal bridging can account for heat loss of up to 30% (percent) in insulated buildings. Continuous Insulation with Panel+ counters this loss, enhancing energy efficiency and sustainability.

Durability

Thin brick offers exceptional resistance to weathering, impact, and UV exposure, ensuring long-lasting aesthetic appeal and structural integrity.

Easy Installation

Designed for ease of installation, Panel+ Brick EIFS system features pre-engineered panels and a straightforward application process, reducing labor costs and construction time.

Quality & Flexibility

Panel+ is designed for diverse applications - interior and exterior, on floors, walls, and ceilings, over various substrates and assembly configurations. The installation system is simple and efficient, ensuring perfect alignment for a high-quality finish.

Cost & Environment

Panel+ is the cost-competitive solution that offers an integrated air barrier system, Continuous Insulation, and a high-quality veneer installation system. Additionally, its water drainage plane, ventilation channels, and insulation offer superior protection and energy efficiency.

PANEL+[®]

STONE & TILE

STONE & TILE EIFS

Stone EIFS from Old Mill Building Products, is part of the Old Mill Systems' Panel+ wall system, offers the timeless elegance and strength of stone with the superior insulation properties of the Panel+ wall system. This patented exterior insulation and finish system integrates high-performance EPS foam panels with luxurious stone and tile veneers, providing an aesthetically pleasing and energy-efficient façade solution.



NFPA 285 Compliant



15-Year Warranty



Reduce Labor up to 60%



Increase Efficiency 40%



EPS Architectural Relief



Sound Dampening

Discover Panel+ Stone Today!

Discover Panel+, an innovative wall system that integrates continuous insulation and an air/water barrier, designed for maximum design flexibility and flawless finish. With Panel+, reduce your labor costs by up to 60% and increase energy efficiency by up to 40%. Enjoy improved sound dampening and outdoor sound isolation with a thermal R-value of 4.2 per inch. Choose from thickness options of 1", 2", 3", 4", and custom options. Panel+ is customizable and comes with a 15-year warranty."

Thermal Efficiency

The EPS Foam Panels at the heart of the system provide continuous insulation with a high R-value, enhancing the building's thermal performance and reducing energy costs.

Aesthetic Versatility

Available in a variety of natural stone and tile finishes, the Stone enhances architectural beauty and meets the aesthetic demands of any project.

Robust Protection

Panel+ incorporates a high-quality air and water barrier that forms a continuous, flexible membrane, protecting the building envelope from air infiltration, water penetration, and incidental water damage.

Easy Installation

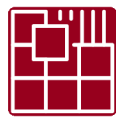
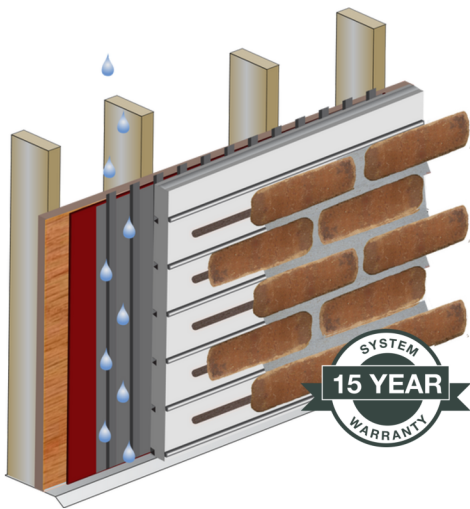
Panel+ is designed for diverse applications - interior and exterior, on floors, walls, and ceilings, over various substrates and assembly configurations. The installation system is simple and efficient, ensuring perfect alignment for a high-quality finish.

Cost & Environment

Panel+ is the cost-competitive solution that offers an integrated air barrier system, Continuous Insulation, and a high-quality veneer installation system. Additionally, its water drainage plane, ventilation channels, and insulation offer superior protection and energy efficiency.

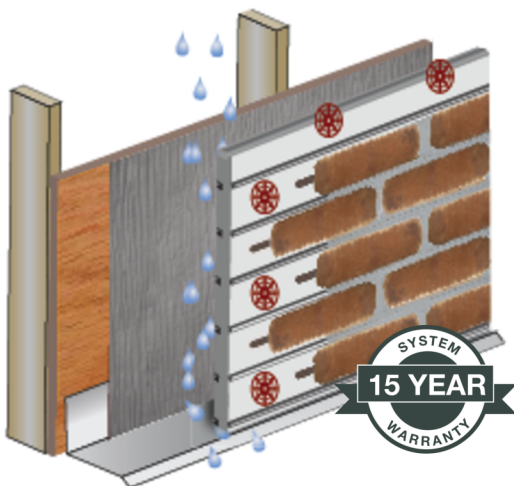
INSTALLATION OPTIONS

EXTERIOR



ADHESIVE FLUID APPLIED

The Fluid Applied Adhesive method is integral to constructing the Panel+ wall system, offering a purposeful solution for attaching EPS Foam Panels to various substrates. This approach involves preparing a specially formulated adhesive mortar that provides high bond strength and necessary flexibility. When mixed and applied, it creates a durable layer that secures the panels in place, ensuring compatibility and resilience in the overall structure. This method is key for achieving a steadfast, long-lasting build that stands up to the demands of any construction project.



MECHANICALLY FASTENED

The mechanical fastening method employs robust 2-inch polymer-based washer fasteners, meticulously engineered to bear the full weight of the insulation panels. These fasteners are crucial in preventing pop-ups, ensuring a secure and stable installation. Compatible with all thicknesses of Old Mill Panel Insulation, they are adept at providing superior performance and maintaining their integrity in a variety of environmental condition. Their design not only guarantees a firm hold but also contributes to the longevity and durability of the Panel+ system, making them an essential component in modern construction.

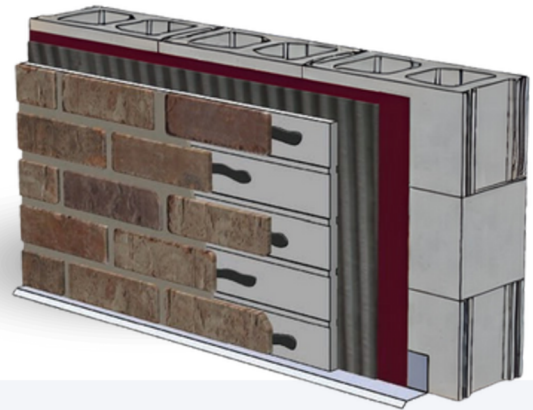
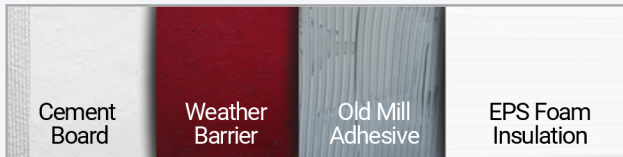


INSTALLATION ASSEMBLIES

EXTERIOR



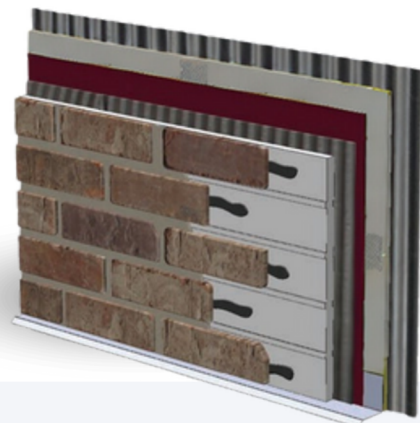
Over Framing / Sheathing



Over Concrete, Brick / CMU



Over Stucco or EIFS



Over Metal Building



TECHNICAL DATA SHEET

System Description

Panel+ is the most cost-effective way to incorporate Continuous Insulation into the building envelope. Our patented system of specialized adhesive, air + water barrier, and foam panels is easy to install, cost-effective, and passes code requirements for continuous insulation.

Uses

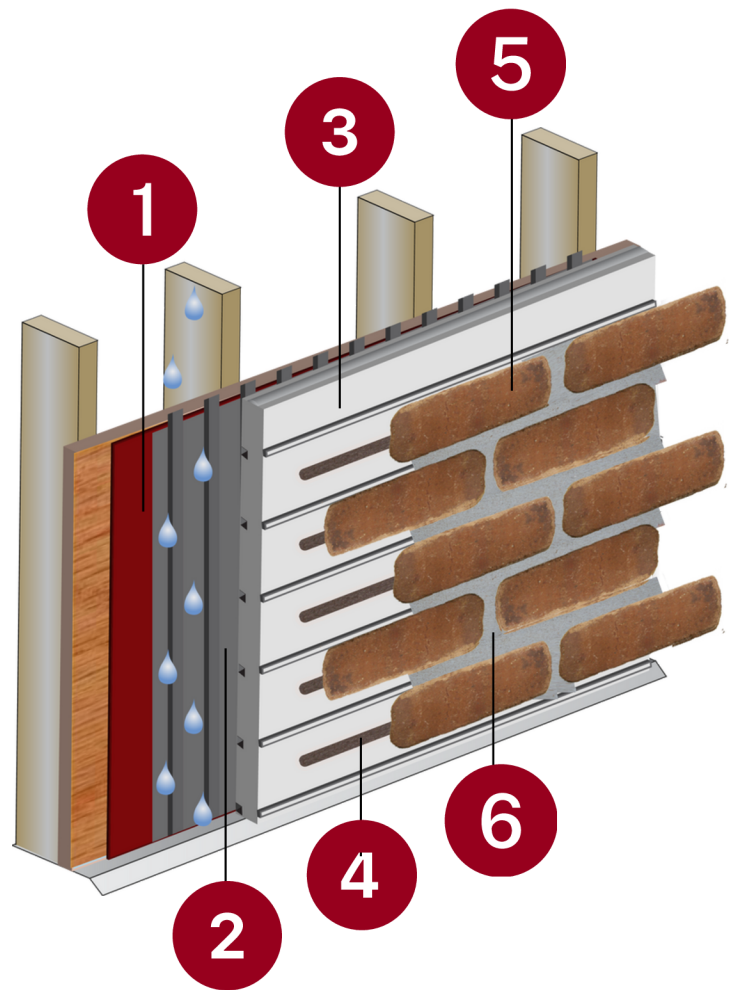
Panel+ may be used in fire-resistance-rated construction and in any construction type (IBC Types I through V), when installed in accordance with Old Mill System's Wall Systems instructions.

Material Substitution

Material substitution will adversely affect system performance and will void all warranty coverage unless approved in writing by Old Mill Building Products.

Warranty

Old Mill Building Products (OM) stands behind its Panel+ Wall System with a 15-Year Limited Warranty. This warranty covers the complete Panel+ Wall System from the date of purchase, provided it's installed in accordance with OM's specifications. Exclusions include misuse, structural issues, unauthorized alterations, and acts of nature. Labor costs are the owner's responsibility. Claims must be made within 30 days. The warranty is governed by Delaware law.



Acceptable Substrates

PermaBase[®] Cement Board and other cement boards conforming with ASTM C1325 (Type A - exterior); poured concrete/unit masonry; ASTM C1177 type sheathings, including Weather Defense[™] Platinum sheathing, GreenGlass[®] sheathing, eXPTM sheathing, GlasRoc[®] sheathing, Securock[™] glass-mat sheathing, and DensGlass[®] exterior sheathing; DensElement (sheathing only), gypsum sheathing (ASTM C79/C1396); Exposure I or exterior plywood (Grade C/D or better); or Exposure I OSB; Huber Zip (sheathing only).

- 1 OM Water & Air Barrier
- 2 OM Adhesive
- 3 OM Panel+ EPS Insulation Board
- 4 OM Adhesive
- 5 OM Adhered Veneer
- 6 Type S Pointing Mortar

PANEL+ WALL SYSTEMS (Continued)

Code Compliance	
Code	Code Description
ASTM C578	(See product marking for type)
ASTM E2485 / E248M	Freeze / Thaw Resistance of EIFS
UL QORW.R16529	Physical Properties
UL BRYX.R16529	Surface Burning
UL ER16529-01	NFPA 285 Approved Assemblies
ULC BOZCC.R16529	CAN/ULC-S102.2, S701
ICC-ES ESR-1962, UL ER16529-01	International Energy Conservation Code (IECC)
ICC-ES ESR-1962, UL ER16529-01	International Residential Code (IRC)
ICC-ES ESR-1962, UL ER16529-01	International Building Code (IBC)

Limitations

For use on above grade vertical walls. System must terminate a minimum of 8-inches (200 mm) above grade. • Additives are not permitted for any Master Builders Solutions product unless approved in writing by Master Builders Solutions Wall Systems. • All products must be installed at minimum 40 °F (4 °C) ambient and substrate temperatures unless otherwise noted on specific Master Builders Solutions Product Bulletins. • Protect all work from precipitation for at least 24-hours after application. • All products must be stored in accordance with specific instructions on relevant Master Builders Solutions Product Bulletins. • All substrates must be clean, dry and sound without planar irregularities greater than 1/4-inch per 10-feet (6 mm per 3 m).

Warranty Statement

Old Mill Building Products (OM) stands behind its Panel+ Wall System with a 15-Year Limited Warranty. This warranty covers the complete Panel+ Wall System from the date of purchase, provided it's installed in accordance with OM's specifications. Exclusions include misuse, structural issues, unauthorized alterations, and acts of nature. Labor costs are the owner's responsibility. Claims must be made within 30 days. The warranty is governed by Delaware law.

1. Manufacturer

Old Mill Building Products

14932 S. Concord Park Drive, Bluffdale, UT 84065

Phone: (888) 264-6455

Web: www.oldmillbuildingproducts.com

2. Product Description

Basic Use

Old Mill Air & Water Barrier is a high quality, elastomeric, single component, fluid applied membrane specifically formulated for use as a load bearing, crack isolation, waterproofing and air barrier that is easily applied by roller, brush, trowel or spray. Old Mill Air & Water Barrier forms a continuous air & water barrier that protects approved substrates from air infiltration/exfiltration as well as incidental water damage. Specifically designed to also be a component of the Old Mill Panel+ continuous insulation engineered wall system. It is suitable as a substrate for affixing adhered masonry veneers as well as EPS Foam Panels when used in conjunction with Old Mill Adhesives.

Composition & Materials

Old Mill Air & Water Barrier is 100% acrylic, single component, water based, Low VOC liquid.

All Old Mill manufacturing is quality controlled to ensure product performance and uniformity.

Limitations & Disclaimers

- Do Not Use in Negative Hydrostatic Pressure Applications
- Always Consult With Design Professional for Placement Location and Permeability Requirements
- Comply With Local Building Code Requirements
- Apply When Temperature is Between 42F and 95F
- Not for Use as a Roofing Membrane Over Occupied Space
- Do Not Use Solvent Based Cleaners or Expose to Solvents

Packaging

- 5 Gallon Plastic Pails

Coverage per pail (sf/sm)*

Roller: 450-500 sf (42-46 sm)


Spray: 300-350 sf (28-32.5 sm)

Trowel: 200-250 sf (18-23 sm)

*All coverage is approximate for a single coat of 15 mils wet film thickness (WFT), 10 mils dry and depend upon substrate, details and individual application.

Shelf Life

2 Years

- 
- ✓ 100% Coverage
 - ✓ Doesn't rattle in the wind
 - ✓ Vapor permeable with low air infiltration rate
 - ✓ Used as water barrier and flashing

Approved Substrates

- Poured in Place Concrete*
- Precast Concrete*
- Concrete Masonry Unit (CMU)
- Brick Masonry
- Cement Backer Unit (CBU)
- Cement Mortar/Plaster/Scratch Coat
- Ceramic/Porcelain Tile
- Natural Stone
- Exterior Rated Gypsum Sheathing
- Oriented Strand Board (OSB)
- Exterior Glue Plywood (EGP)

* Release agents must be mechanically removed prior to application

Advantages

- Provides Maximum Adhesion
- High Permeability (Non-Permeable Version Available)
- Highly Flexible to Bridge Cracks in Substrate
- Meets ASTM E2537 Air Leakage of Building Assemblies
- Meets ASTM D1970 Nail Seal-ability Requirements
- Install Adhered Masonry Veneers Directly
- Sprayable With Airless Spray Equipment
- UV Exposure Window of Up to Six Months
- User Friendly Single Component
- Water Based for Safety and Simple Clean-up
- Freeze/Thaw Stable in Service
- Consistent Quality Control
- Fluid Applied Simplifies Sealing Complex Detailing
- Qualifies for a 5 or 15 Year System Warranty
- Can be Used Below Grade and in Immersion

1. Manufacturer

Old Mill Building Products

14932 S. Concord Park Drive, Bluffdale, UT 84065

Phone: (888) 264-6455

Web: www.oldmillbuildingproducts.com

2. Product Description

Basic Use

Old Mill Air & Water Barrier is a high quality, elastomeric, single component, fluid applied membrane specifically formulated for use as a load bearing, crack isolation, waterproofing and air barrier that is easily applied by roller, brush, trowel or spray. Old Mill Air & Water Barrier forms a continuous air & water barrier that protects approved substrates from air infiltration/exfiltration as well as incidental water damage. Specifically designed to also be a component of the Old Mill Panel+ continuous insulation engineered wall system. It is suitable as a substrate for affixing adhered masonry veneers as well as EPS Foam Panels when used in conjunction with Old Mill Adhesives.

Composition & Materials

Old Mill Air & Water Barrier is 100% acrylic, single component, water based, Low VOC liquid.

All Old Mill manufacturing is quality controlled to ensure product performance and uniformity.

Limitations & Disclaimers

- Do Not Use in Negative Hydrostatic Pressure Applications
- Always Consult With Design Professional for Placement Location and Permeability Requirements
- Comply With Local Building Code Requirements
- Apply When Temperature is Between 42F and 95F
- Not for Use as a Roofing Membrane Over Occupied Space
- Do Not Use Solvent Based Cleaners or Expose to Solvents

Packaging

- 5 Gallon Plastic Pails

Coverage per pail (sf/sm)*

Roller: 450-500 sf (42-46 sm)


Spray: 300-350 sf (28-32.5 sm)

Trowel: 200-250 sf (18-23 sm)

*All coverage is approximate for a single coat of 15 mils wet film thickness (WFT), 10 mils dry and depend upon substrate, details and individual application.

Shelf Life

2 Years

- 
- ✓ 100% Coverage
 - ✓ Doesn't rattle in the wind
 - ✓ Vapor permeable with low air infiltration rate
 - ✓ Used as water barrier and flashing

Approved Substrates

- Poured in Place Concrete*
- Precast Concrete*
- Concrete Masonry Unit (CMU)
- Brick Masonry
- Cement Backer Unit (CBU)
- Cement Mortar/Plaster/Scratch Coat
- Ceramic/Porcelain Tile
- Natural Stone
- Exterior Rated Gypsum Sheathing
- Oriented Strand Board (OSB)
- Exterior Glue Plywood (EGP)

* Release agents must be mechanically removed prior to application

Advantages

- Provides Maximum Adhesion
- High Permeability (Non-Permeable Version Available)
- Highly Flexible to Bridge Cracks in Substrate
- Meets ASTM E2537 Air Leakage of Building Assemblies
- Meets ASTM D1970 Nail Seal-ability Requirements
- Install Adhered Masonry Veneers Directly
- Sprayable With Airless Spray Equipment
- UV Exposure Window of Up to Six Months
- User Friendly Single Component
- Water Based for Safety and Simple Clean-up
- Freeze/Thaw Stable in Service
- Consistent Quality Control
- Fluid Applied Simplifies Sealing Complex Detailing
- Qualifies for a 5 or 15 Year System Warranty
- Can be Used Below Grade and in Immersion

3. Technical Data

Applicable Standards

ASTM C297/E2134 | ASTM D1970 | ASTM D2247
ASTM E72 | ASTM E84 | ASTM E96 | ASTM E330
ASTM E331 | ASTM E1233 | ASTM E1354 |
ASTM E2178 | ASTM E2357 | ASTM E2485 |
AATCC 127 | ICC ES AC212 | NFPA 285

Physical Properties

VOC Content, g/L	10
Color	Maroon
ASTM D1970 Nail Sealability	Pass
Maximum Service Temperature	180F
ASTM E96 Permeance	30 Perms
ASTM E2357 Air Leakage	0.003L/s-m ²
ASTM E330	Pass @ 150 PSF
Application Range	42 – 95 F

4. Installation

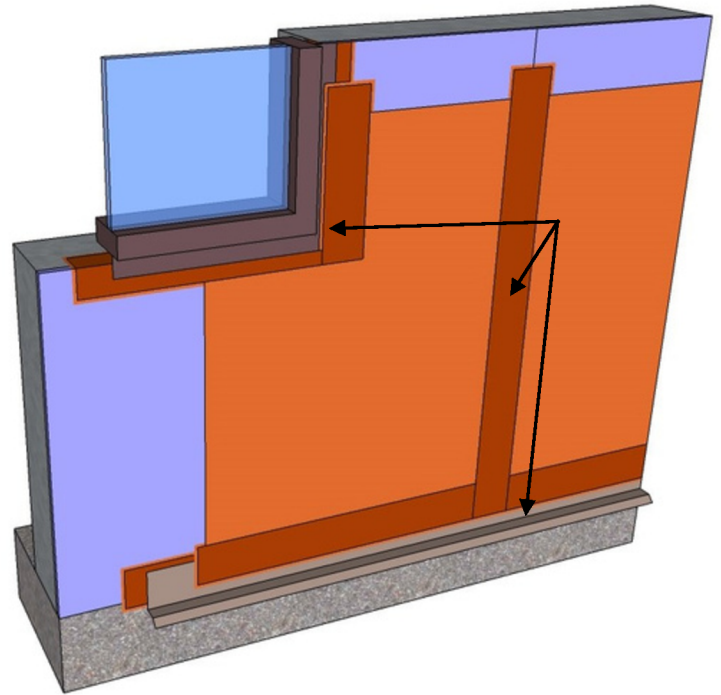
Surface Preparation

All surfaces should be dry, structurally sound, clean and free of dirt, dust, efflorescence, grease, oils, sealers, curing compounds, adhesive residues or any contaminant that could impede bond. Existing tile should be abraded to provide for a mechanical bond. Do not proceed with work until the surfaces to be applied to comply with all manufacturer's requirements.

Exterior sheathing panels should be installed in compliance with manufacturer's instructions. Masonry walls should be treated to patch cracks, voids and other irregularities and remove any protrusions, Fill mortar joints and strike flush. Cast concrete must cure 28 days prior to application of membrane and all form releases must be mechanically removed.

Mixing

Thoroughly stir Old Mill Air & Water Barrier to a homogenous consistency. Do not add water, accelerators or retarders.



Application

Old Mill Air & Water Barrier is applied by first treating the sheathing joints (where applicable), fastener locations, and changes of plane/substrate by first applying a thin layer of Old Mill Air & Water Barrier then embedding Old Mill Polylaminate Fabric into the wet air barrier and troweling smooth. Fastener locations may be spot treated with a brush or trowel and do not require the reinforcing mesh.

Coat the entire surface to be treated using brush, roller (½" to ¾" nap), trowel or airless spray equipment techniques. Apply an even, continuous coat of 15 mils wet film thickness (wft). CMU, OSB and other rough, absorptive substrates require two coats to achieve a pinhole free coating.

Clean tools and equipment with soapy water.

Spray Application

Old Mill Weather Barrier is compatible with GRACO and Titan airless spray equipment with the following specifications.

- Minimum 1 gallon per minute output.
- Minimum hose width of 3/8 inch.
- Minimum tip size of 0.027-0.031.
- Minimum pressure requirement to spray of 2,000 psi at the gun with an airless sprayer rated no lower than 3,300 psi.
- Remove all filters in sprayer and gun before application.
- Hopper Gun: 3/16"-1/4" (6-6.5 mm) orifice, 23-25 psi.

1. Manufacturer

Old Mill Building Products

14932 S. Concord Park Drive, Bluffdale, UT 84065

Phone: (888) 264-6455

Web: www.oldmillbuildingproducts.com

2. Product Description

Basic Use

Old Mill Adhesive is a premium, polymer modified, fiber-reinforced adhesive mortar designed specifically for the installation of thin adhered masonry veneer, including thin brick, natural stone, manufactured stone, tile, calcium silicate units and other code compliant adhered masonry materials when applied to approved substrates. Old Mill Adhesive may be used for vertical, horizontal and overhead applications in both interior and exterior exposure. In addition, it is designed to adhere Old Mill Panel+ EPS panels to approved substrates. This versatile mortar may also be used as EIFS base coat and adhesive.

Composition & Materials

Old Mill Adhesive is a dry, pre-blended, proprietary mortar containing cementitious materials, high-performance polymers, fiber and sand.

All Old Mill manufacturing is quality controlled to ensure product performance and uniformity.

Limitations & Disclaimers

- Do Not Cover Over Movement Joints With Mortar
- Substrate Maximum Design Deflection of $l/360$
- Comply With Local Building Code Requirements
- Apply When Temperature is Between 42oF and 95oF
- Do Not Retemper Once Mixed. Do Not Overwater
- For White and Light Colored Stones, Conduct a Test Area to Ensure There is no Staining or Shadowing

Coverage

Method of Application	Coverage
(1/2"x2"x1/2" U-Notch)	70SF
1/4" x 3/8" Square Notch Trowel	66SF
1/2" x 1/2" Square Notch Trowel	40SF
Backbutter Method	30-40SF
Grout Bag Method	70SF



Approved Substrates

- Poured in Place Concrete*
- Precast Concrete*
- Concrete Masonry Unit (CMU)
- Brick Masonry
- Cement Backer Unit (CBU)
- Cement Mortar/Plaster/Scratch Coat
- Ceramic/Porcelain Tile
- Natural Stone
- Exterior Rated Gypsum Sheathing†
- Oriented Strand Board (OSB)†
- Gypsum Wallboard/Plaster (interior, dry areas only)
- Exterior Glue Plywood (EGP) (interior, dry areas only)†

* Release agents must be mechanically removed prior to application

† Exterior use only when coated with Old Mill Air & Water Barrier

Advantages

- Provides Maximum Adhesion
- High Strength Fiber Reinforcement
- Excellent Workability for Easy Installation
- Greater Efflorescence Resistance than Type S/N Mortar
- Low Shrinkage Reduces Cracking/Debonding Risk
- Mix With Water Only
- Freeze/Thaw Stable
- Consistent Quality Control
- Flexible Formulation Accommodates Movement
- Qualifies for a 5 or 15 Year System Warranty
- Can be Used Below Grade and in Immersion

Packaging

- 50 lb. Multi-wall bags

3. Technical Data

Physical Properties

Test	Test Method	Results:
Shore A Hardness	ASTM C661	57 +/- 5
Max Tensile	ASTM D412	575 psi
LAP Shear	ASTM D1002	> 300 psi
Elongation Break	ASTM D412	> 110%
Low Temp Flex	ASTM C734	Pass

4. Installation

Surface Preparation

All surfaces should be dry, structurally sound, clean and free of dirt, dust, efflorescence, grease, oils, sealers, curing compounds, adhesive residues or any contaminant that could impede bond. Glossy surfaces should be mechanically roughened by sanding, shot-blasting, sandblasting or other mechanical means. Existing tile should be abraded to provide for a mechanical bond. Do not proceed with work until the surfaces to be applied to comply with all manufacturer's requirements. Also, clean the backs of the veneer pieces to be installed to the same standard as the substrate. Chip off any protrusions that would impede even setting of the veneer pieces. When used, allow Old Mill Air & Water Barrier to dry overnight (12-24 hours) prior to application of finish.

Mixing

Into a clean 5 gallon pail add 5 quarts of clean potable water and slowly add the entire contents of a bag of Old Mill Brick & Panel Adhesive while mixing with a slow speed mixer for 1-2 minutes until a smooth, creamy consistency is achieved. Allow to slake for 5 minutes and remix for 1 minute. If necessary, adjust water slightly at this time adding only slight amounts of water being careful not to overwater the mix.



Admixtures

No admixtures of any kind should be used and use of admixtures will void all warranty coverage.

Application

Based on the substrate and type of finish being installed, select from one of the following application methods:

Notched Trowel Method

Using the appropriate size notched trowel based on finish piece size, start by keying in a thin coat of mortar into the substrate using the flat edge of the trowel. Then spread more material over the area sufficient to allow combing of the material to the desired size ridges with the notched side of the trowel. Spread only enough mortar that can be covered before skinning over. Apply additional mortar to the back of the finish piece to ensure full coverage when set. Place the veneer piece and adjust to desired position. Clean excess mortar from around the edges and apply to the next piece being set

Backbutter Method

Key in a thin layer of mortar to the back of the veneer piece being set. Add mortar to build approximately one half inch of mortar on the back of the piece ensuring the entire space between the veneer and substrate will be filled with mortar. Press the piece to the substrate and slide a bit sideways and back to squeeze out excess mortar all around the veneer being set. Using the trowel scrape the excess mortar from around the piece and apply to the next one.

Grout Bag Method

When setting thin brick into the Old Mill BrickPanel+ EPS panels, use a grout bag to apply a 3/4" bead along the course between alignment ridges. Press the individual thin bricks into the mortar ensuring mortar extrudes out all around the thin brick. Scrape off any excess mortar that extrudes over the alignment ridges and reuse.

Grouting/Pointing (if needed)

Allow the veneer to set overnight (12-24 hours) before attempting to point the joints. Using a grout bag filled with Old Mill Colored Pointing Mortar or Type S/N masonry mortar, apply pointing mortar into the joints between the veneer pieces ensuring to fill the full depth of the joint and overfilling the joint beyond the face of the veneer to allow the needed material for compaction into the joint. Allow the pointing mortar to become thumbprint hard and tool as specified. Once dried, brush off crumbs and excess pointing mortar with a stiff bristle brush. Do not use metal brushes for this process.

5. Availability & Cost

Old Mill Systems' products are available in all US markets and in select regions of Canada. Contact Old Mill Building Products for more information or go to www.oldmillbuildingproducts.com for more information

6. Warranty

To view the Old Mill 5/15 Year Commercial System Warranty please visit www.oldmillbuildingproducts.com.

7. Maintenance

Depending on service, masonry walls may require periodic cleaning.

8. Technical Services

Technical assistance, including more detailed information, product literature, test results, project lists, samples, assistance in preparing project specifications and arrangements for job site inspection and consultation, is available by contacting Old Mill Building Products.

9. Filing Systems

Additional Information is available from the manufacturer upon request.

1. Manufacturer

Old Mill Building Products

14932 S. Concord Park Drive, Bluffdale, UT 84065

Phone: (888) 264-6455

Web: www.oldmillbuildingproducts.com

2. Product Description

Basic Use

Old Mill Panel+ EPS Foam Panels are engineered continuous insulation panels designed for use in the Old Mill Panel+ engineered wall system. These patented panels provide the insulation layer as well as the substrate for adhered masonry veneers in commercial and residential applications. Specifically designed with functional profiles to accommodate drainage, ventilation, structural integrity and alignment for the various finishes that can be employed with the system, these panels are an integral part of the patented Old Mill Panel+ Full Wall System.

Composition & Materials

Old Mill Panel+ EPS Foam Panels are made of superior closed cell, lightweight and resilient expanded polystyrene (EPS).

All Old Mill manufacturing is quality controlled to ensure product performance and uniformity.

Limitations & Disclaimers

- Do Not Use in Below Grade Installations
- Comply With Local Building Code Requirements
- Not for Use as a Roofing or Below Grade Insulation
- Do Not Use Solvent Based Cleaners or Expose to Solvents

Packaging

- 2' x 4' Panels
- 4' x 4' Panels
- Thicknesses from 1"-4"
- Custom shapes, thicknesses and sizes also available



Advantages

- Environmentally Friendly
- Stable, Long-Term R-value – No Thermal Drift
- Water Resistance – No Swelling
- Code Approvals
- Cost Efficient
- Insect and Mold Resistance
- Superior Drainage and Drying Potential
- Recyclable
- Freeze/Thaw Stable in Service
- Consistent Quality Control
- Zero Ozone Depletion Potential (ODP)
- Qualifies for a 5 or 15 Year System Warranty

3. Technical Data

Applicable Standards

ASTM C203	A ASTM C578	ASTM E96
ASTM C272	ASTM D1621	ICC ES AC12
ASTM C518	STM E84	NFPA 285

Physical Properties

ASTM D1621; Compressive Strength	15 psi
ASTM C578 Classification	Type II
ASTM C518; R-value @ 25oF	4.8/inch
Maximum Service Temperature	180oF
ASTM E96; Permeance	3.5 Perms
ASTM E84; Flame Spread	<25
ASTM E84; Smoke Developed	<450
ASTM C203; Flexural Strength	35 psi



4. Installation

Adhesive - Fluid Applied

Solid substrates (brick, block, concrete, etc.): Begin by applying a 10 mil WFT coat of Old Mill Air & Water Barrier liquid. After a minimum of 20 minutes, double back with a second pass and apply an additional 10 mil coat WFT of Old Mill Air & Water Barrier liquid over entire wall. Allow curing for a minimum of 18 hours protected from precipitation and freezing conditions. Old Mill panel may be applied after 18 hours. Nail able substrates (OSB, plywood, gypsum): Begin by applying a 10 mil WFT coat of Old Mill Air & Water Barrier liquid. Immediately embed runs of Old Mill Poly laminate Reinforcing Fabric at all sheathing joints and outside corners by using a trowel and working from the center and moving outward, press the fabric into the wet weather barrier. Lap runs of mesh at least 2-1/2". After a minimum of 20 minutes, double back with a second pass and apply an additional 15 mil WFT coat of weather barrier over entire wall. Allow curing for 12-24 hours protected from precipitation and freezing conditions. Old Mill panel may be applied after 12-24 hours. Begin panel installation at an outside corner. Panels must overlap where they meet at outside corners at inside corners, position panel to accommodate a backer rod and sealant. Install pre-bricked panels as indicated on drawings being sure the appropriate panel configuration is installed to match the designation on the drawings. Do not install panels below grade. Use a utility knife to cut panels where necessary. Where panels abut wall openings, maintain a 1/4" clearance between the panels and the flashings. Offset successive vertical rows of panels at least 16."

Mechanically Fastened

Begin by attaching drainable building wrap to entire wall surface where Old Mill Panel+ will be used. Attach foam panel over building wrap through sheathing with Old Mill plastic 2" washers using screws at least 1" longer than the thickness of the panel and substrate. These fasteners should be installed every 16" horizontally and 8" vertically. More fasteners should be used around edges. Care must be taken to assure that the fastener is firmly seated on the foam panel and fastened so that the outer surface of the fastener is flush with the outer surface of the panel.

Mechanically Fastened Continued

Begin panel installation at an outside corner. Panels must overlap where they meet at outside corners at inside corners, position panel to accommodate a backer rod and sealant. Do not install panels below grade. Use a utility knife, hand saw or hot knife to cut panels where necessary. Where panels abut wall openings, maintain a 1/4" clearance between the panels and the flashings. Offset successive vertical rows of panels at least 16."

5. Availability & Cost

Old Mill Systems' products are available in all US markets and in select regions of Canada. Contact Old Mill Building Products for more information or go to www.oldmillbuildingproducts.com for more information.

6. Warranty

To view the Old Mill 5/15 Year Commercial System Warranty please visit www.oldmillbuildingproducts.com.

7. Maintenance

No maintenance required.

8. Technical Services

Technical assistance, including more detailed information, product literature, test results, project lists, samples, assistance in preparing project specifications and arrangements for job site inspection and consultation, is available by contacting Old Mill Building Products.

9. Filing Systems

Additional Information is available from the manufacturer upon request.

1. Manufacturer

Old Mill Building Products

42 E 1100 S, Suite 6, American Fork, UT 84003

Phone: (888) 264-6455

Web: www.oldmillbuildingproducts.com

2. Product Description

Basic Use

MasonGrip MS Polymer Adhesive is a high strength, high viscosity, one-component elastic adhesive for indoor and outdoor applications based on MS Polymer. Specially designed for fast and non-rigid structural bonding in the construction industry and as an alternative to thin-set mortar, it has excellent adhesion to most substrates. Completely weather resistant, odorless and does not contain solvents, silicones or isocyanate's, and as a result will not leach or stain Brick or natural stone.

Limitations & Disclaimers

It is important not to tool the sealant too thin or smear it on both sides of the joint. If the material is smeared on both sides, it can cause premature joint failure and color fading. Do not tool or smear/feather on pre-finished colored claddings (i.e. siding, trim, etc.) as this will reduce any sealant's ability to withstand UV exposure and joint movement, causing premature joint failure and color fading.

Color & Packaging

This product is packaging in 9.8 oz / 290 ml cartridges and 20 oz sausages / 600 ml.

Colors: Grey, other colors available on request and subject to minimum order quantities

Shelf Life

18 months

Diverse Applications

From thin brick to fiber cement, and from kitchen fixtures to exterior siding, MasonGrip is your go-to solution for a wide range of construction needs.



Fields of Application

- Old Mill Panel+ Wall System
- Bonds & Seals to most surfaces
- Kitchen & Bathroom fixtures
- Countertops & Backsplashes
- Windows & Doors
- Wood, Moulding/Trim, & Siding
- Thresholds, Sills, Siding, & Vents
- Ductwork & HVAC
- Aluminum, Brass, Steel...
- Polystyrene, SM Insulation Board
- Brick, Stone, Fiber Cement, & Tile
- Concrete Marble, Granite...

Benefits & Advantages

- High Performance Instant Grab
- Seals & Bonds in any condition
- Suitable for both indoor and outdoor use
- Environment-friendly with no VOCs
- Exceptional tensile strength
- Waterproof, flexible, and crack-proof
- Vibration & Impact resistant
- Non-Sag, Vibration, & Impact Resistant
- For Interior & Exterior use
- An Alternative to Thin-Set Mortar
- Eliminates the need for nails, screws, or clamps
- Cures within 24 hours under normal conditions

3. Technical Data

Information

Raw material basis: MS Polymer
Consistency: No-slump, non-sagging paste
Specific gravity: Approx. 1.30 g/ml +/- 0.02
Working time: 10-20 minutes (@ 73.4 °F; 50% R.H.)
Curing time: 2-3 mm/24 hr
Consumption: Approx. 25 linear
Application temperature: Between 41 °F to 104 °F

Applicable Standards

ASTM C661 | ASTM D412 | ASTM C734
ASTM D1002

Physical Properties

Service Temperature	-40 °F to 212 °F
Shore A Hardness	57 +/- 5
UV Ratings after 2,000 hours	No Change
Max Tensile	575 psi
Elongation at Break	> 110%
Movement Capacity	+/- 25%
Corrosive/ Staining	None
Shrinkage	Zero

4. Installation

Application

For optimal results the substrates must be clean, dry, and free of old residues, polish, liquid sealants, wax, dust, grease and other contaminants which may affect the adhesion.

Painted surfaces must be well cured and free of loose paint. The product is suitable for many types of construction materials, however, a preliminary adhesion test is recommended on every surface.

After substrate preparation, apply with a manual- or pneumatic caulking gun. Uncured product may be easily removed with any solvent. Cured sealant must be removed mechanically.

If worried about UV exposure, see limitations.

Optimum bonding will be obtained after complete curing, i.e. after 24 to 48 hours at 73°F for a thickness between 2 to 3 mm.

5. Availability & Cost

Old Mill Systems' products are available in all US markets and in select regions of Canada. Contact Old Mill Building Products for more information or go to www.oldmillbuildingproducts.com for more information

6. Warranty

To view the Old Mill 5/15 Year Commercial System Warranty please visit www.oldmillbuildingproducts.com.

7. Maintenance

No maintenance required.

8. Technical Services

Technical assistance, including more detailed information, product literature, test results, project lists, samples, assistance in preparing project specifications and arrangements for job site inspection and consultation, is available by contacting Old Mill Building Products.

9. Filing Systems

Additional Information is available from the manufacturer upon request.

Contact Us



Old Mill Building Products
42 E 1100 S, Suite 6
American Fork, UT 84003
888.264.6455

1. Manufacturer

Old Mill Building Products

42 E 1100 S, Ste 6, American Fork, UT 84003

Phone: (888) 264-6455

Web: www.oldmillbuildingproducts.com

2. Product Description

Basic Use

Stone ledgers are versatile, high-quality natural stone products designed for both interior and exterior applications. Ideal for enhancing the aesthetic appeal of residential and commercial spaces, these stone ledgers can be used in various settings such as feature walls, fireplaces, facades, garden walls, and accent walls. Composed of slate, quartzite, and limestone, stone ledgers are available in finishes such as split face, broken face, and 3-D geometric, offering a range of design options to suit any architectural style. Suitable for installation in areas subject to both dry and moist conditions.

Composition & Materials

Our stone ledgers are crafted from premium natural stones, including slate, quartzite, and limestone. These materials are available in various finishes such as split face, broken face, and 3-D geometric, ensuring a versatile and aesthetically pleasing option for any project. Each stone is carefully selected and processed to maintain its natural beauty and durability.

Limitations & Disclaimers

- For interior use, stone ledgers should not be installed more than 10 feet above ground level.
- Exceptions apply if the stone is adhered to Old Mill's Panel+ wall system.
- Ensure compliance with local building codes and regulations.
- Not recommended for use in areas subject to extreme moisture or temperature fluctuations without proper treatment.

Adhesives

For exteriors, we recommend Old Mill's MasonGrip MS Polymer Adhesive

For interiors, we recommend Old Mill's Brick Bond Multi-Purpose Adhesive



Approved Substrates

- Fully cured concrete
- Masonry Brick
- Regular Brick
- Cement Mortars
- Cementitious Backer Units
- Gypsum Plaster
- Gypsum Wallboard
- Exterior Grade Plywood

Advantages

- Quick and easy do-it-yourself installation
- Engineered real stone for optimum durability and versatility
- Pre-installed stone panels for quick and easy installation
- Easy maintenance
- Cuts easily with an angle grinder or wet tile saw
- Adds comfort, style, and value to your home or business

Size & Coverage

Stone Ledger	Coverage
Panels: 6" x 24"	1SF
Corners: 6" x 6" x 18"	1SF
Single box of Panels (6 pcs)	6SF
Single box of Corners (6 sets)	6SF
Thickness .75" - 1.25"	

Packaging

- Panels: 6 pcs/box
- Corners: 6 sets/ box

BRICK SOLID COLORS

Below are some of the stunning thin brick colors available to choose from. We offer the flexibility to order special colors and different sizes of bricks, providing over 400 options to meet your unique design needs. We encourage you to contact us for a quote or any questions – we're here to help you find the perfect solution for your project.

BROWNS



B1



B2



B3



B4

RED / ORANGE



O1



O2



R1



R2

GREY / BLACK



G1



G2



G3



B1

WHITE / LIGHT



Cascade



Bonneville



Artisan Paintable

BRICK BLENDS

RED / ORANGE



Bridgewater



Boston Mill



Midtown



Castle Gate



Columbia Street



Highland



Rosewood



Riviera



Independence



Townmark

BROWN



Millhouse



Durango



Chestnut



Rushmore



Vintage Oak



Telluride



Cafe Mocha



Cappuccino



Chestnut



Flagstone

BRICK BLENDS

BROWN *Continued*



Olympus



Stronghold



Rustic Iron



Seaside



Volcanic Ash



Silver Sand



Battlement



Ocean Coral



Driftwood



Tundra

LIGHT



Autumn Grey



Denali



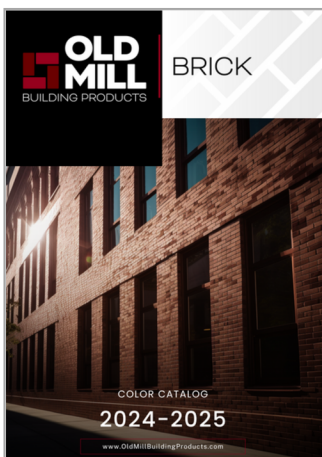
Tahoe



Glacier Bay



Sundance



Scan the QR code to see our most current and full color catalog of thin brick colors.

STONE COLORS

MARBLE



Aspen



Nimbus



Crete



Glacier



Sterling

QUARTZITE



Blue Ridge



Vista



Rocky Mountain



Geneva



Black Hills

SLATE



Sawtooth



Rainier



Teton



Wind River



Wasatch



Scan the QR code to see our most current and full color catalog of thin stone colors.



**For inquiries,
contact us.**

www.oldmillbuildingproducts.com

hello@oldmillbp.com

888-264-6455