

1. Manufacturer

Old Mill Building Products

42 E 1100 S, Ste 6, American Fork, UT 84003

Phone: (888) 264-6455

Web: www.oldmillbuildingproducts.com

System Description

Panel+ is the most cost-effective way to incorporate Continuous Insulation into the building envelope. Our patented system of specialized adhesive, air + water barrier, and foam panels is easy to install, cost-effective, and passes code requirements for continuous insulation.

Uses

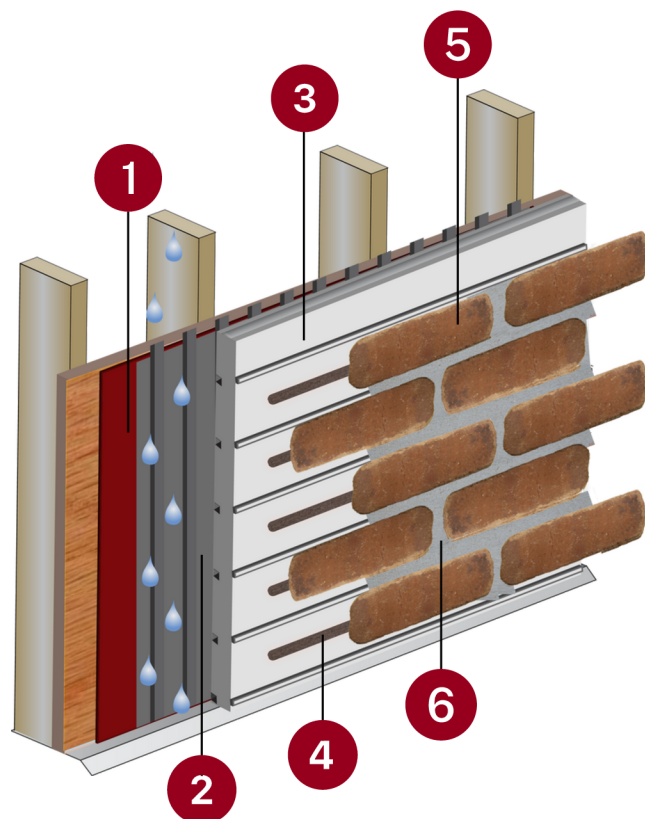
Panel+ may be used in fire-resistance-rated construction and in any construction type (IBC Types I through V), when installed in accordance with Old Mill System's Wall Systems instructions.

Material Substitution

Material substitution will adversely affect system performance and will void all warranty coverage unless approved in writing by Old Mill Building Products.

Warranty

Old Mill Building Products (OM) stands behind its Panel+ Wall System with a 15-Year Limited Warranty. This warranty covers the complete Panel+ Wall System from the date of purchase, provided it's installed in accordance with OM's specifications. Exclusions include misuse, structural issues, unauthorized alterations, and acts of nature. Labor costs are the owner's responsibility. Claims must be made within 30 days. The warranty is governed by Delaware law.



1 Weather Barrier

2 Adhesive

3 EPS Insulation Board

4 OM Adhesive

5 OM Adhered Veneer

6 Type S Pointing Mortar

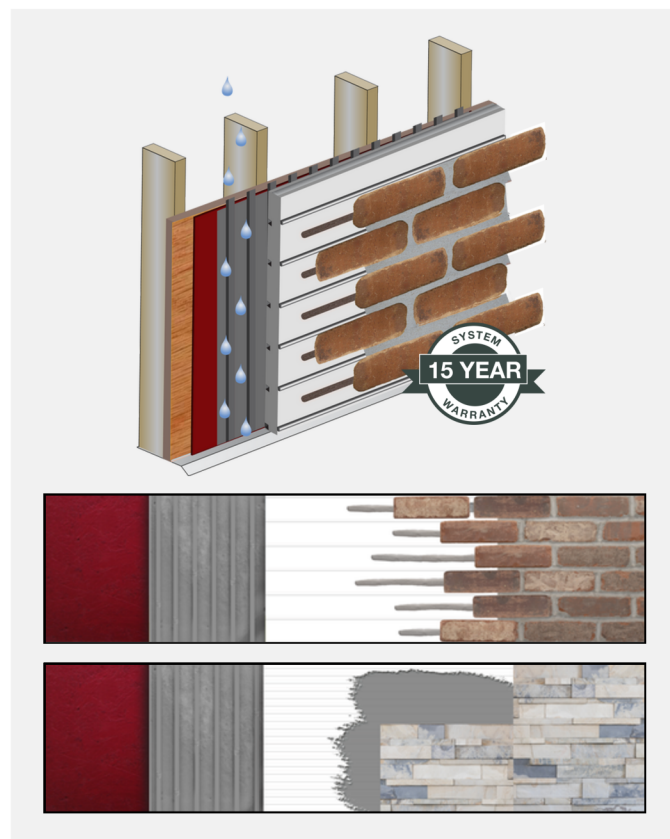
Acceptable Substrates

PermaBase® Cement Board and other cement boards conforming with ASTM C1325 (Type A - exterior); poured concrete/unit masonry; ASTM C1177 type sheathings, including Weather Defense™ Platinum sheathing, GreenGlass® sheathing, eXPTM sheathing, GlasRoc® sheathing, Securock™ glass-mat sheathing, and DensGlass® exterior sheathing; DensElement (sheathing only), gypsum sheathing (ASTM C79/C1396); Exposure I or exterior plywood (Grade C/D or better); or Exposure I OSB; Huber Zip (sheathing only).

Installation Options

Adhesive Fluid Applied

The Fluid Applied Adhesive method is integral to constructing the Panel+ wall system, offering a purposeful solution for attaching EPS Foam Panels to various substrates. This approach involves preparing a specially formulated adhesive mortar that provides high bond strength and necessary flexibility. When mixed and applied, it creates a durable layer that secures the panels in place, ensuring compatibility and resilience in the overall structure. This method is key for achieving a steadfast, long-lasting build that stands up to the demands of any construction project.



Mechanically Fastened

The mechanical fastening method employs robust 2-inch polymer-based washer fasteners, meticulously engineered to bear the full weight of the insulation panels. These fasteners are crucial in preventing pop-ups, ensuring a secure and stable installation. Compatible with all thicknesses of Old Mill Panel Insulation, they are adept at providing superior performance and maintaining their integrity in a variety of environmental condition. Their design not only guarantees a firm hold but also contributes to the longevity and durability of the Panel+ system, making them an essential component in modern construction.



Code Compliance

Code	Code Description
ASTM C578	(See product marking for type)
ASTM E2485 / E248M	Freeze / Thaw Resistance of EIFS
UL QORW.R16529	Physical Properties
UL BRYX.R16529	Surface Burning
UL ER16529-01	NFPA 285 Approved Assemblies
ULC BOZCC.R16529	CAN/ULC-S102.2, S701
ICC-ES ESR-1962, UL ER16529-01	International Energy Conservation Code (IECC)
ICC-ES ESR-1962, UL ER16529-01	International Residential Code (IRC)
ICC-ES ESR-1962, UL ER16529-01	International Building Code (IBC)

Limitations

For use on above grade vertical walls. System must terminate a minimum of 8-inches (200 mm) above grade. • Additives are not permitted for any Old Mill Building Products' product unless approved in writing by Old Mill Building Products. • All products must be installed at minimum 40 °F (4 °C) ambient and substrate temperatures unless otherwise noted on specific Old Mill Product Bulletins. • Protect all work from precipitation for at least 24-hours after application. • All products must be stored in accordance with specific instructions on relevant Old Mill Product Bulletins. • All substrates must be clean, dry and sound without planar irregularities greater than 1/4-inch per 10-feet (6 mm per 3 m).

Warranty Statement

Old Mill Building Products (OM) stands behind its Panel+ Wall System with a 15-Year Limited Warranty. This warranty covers the complete Panel+ Wall System from the date of purchase, provided it's installed in accordance with OM's specifications. Exclusions include misuse, structural issues, unauthorized alterations, and acts of nature. Labor costs are the owner's responsibility. Claims must be made within 30 days. The warranty is governed by Delaware law.